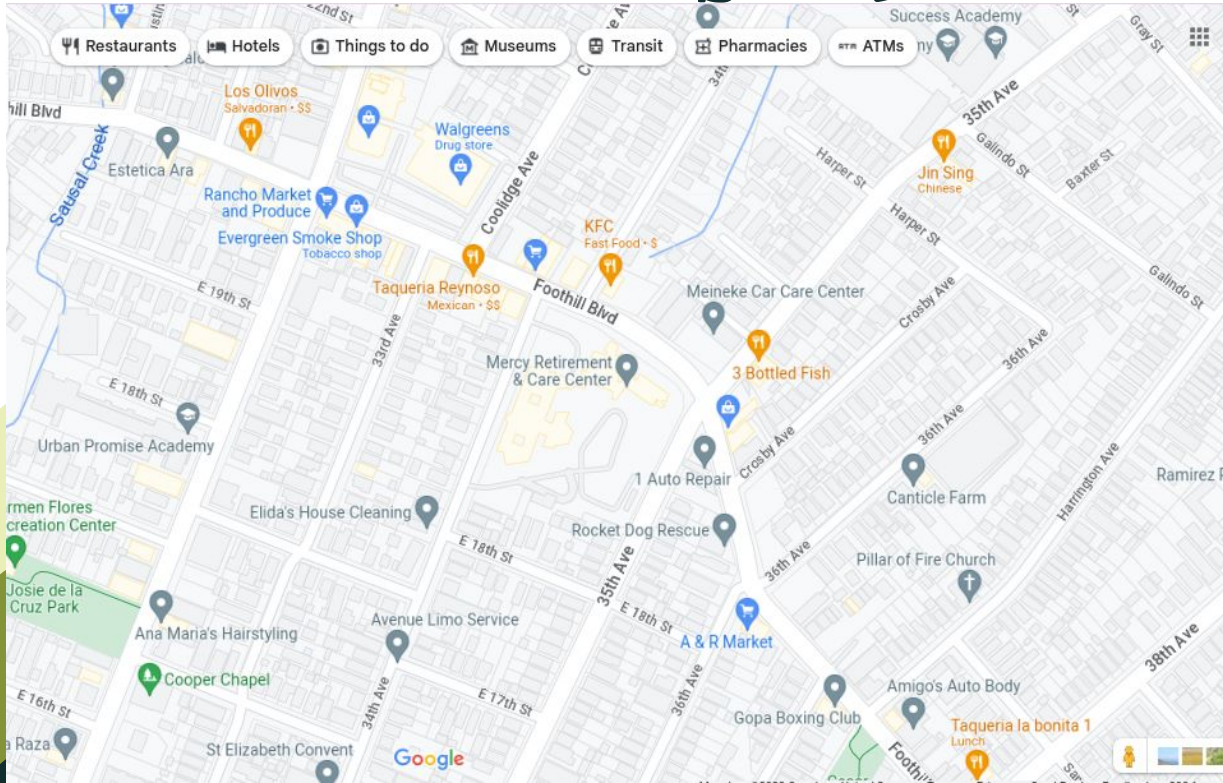




# Indigenous Land Connection

By: Emiko 

# My Neighborhood



# Native Land

01

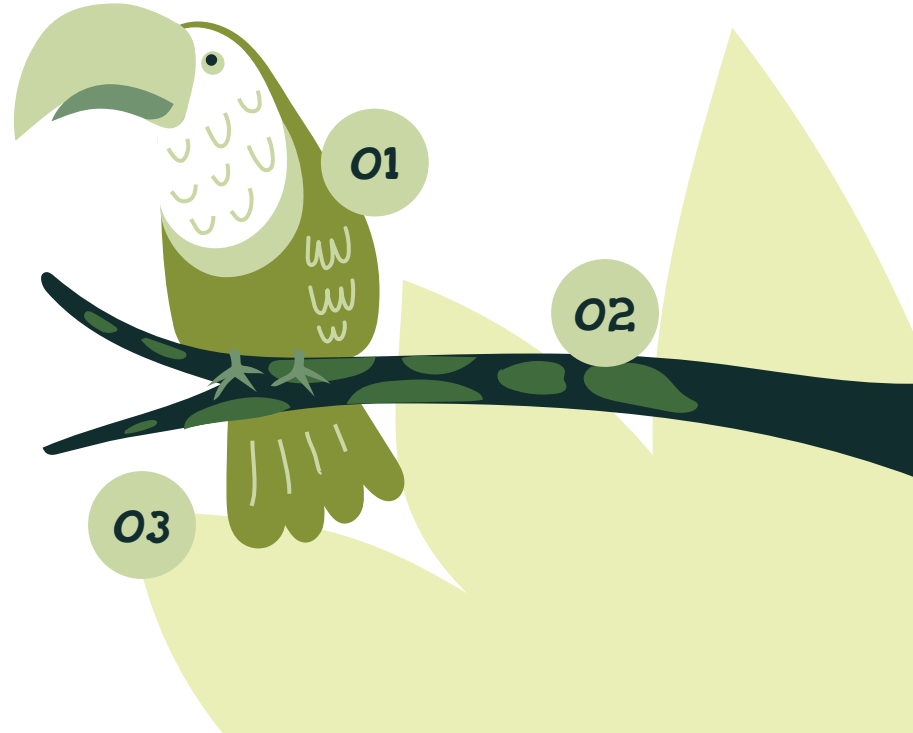
## Tribes

- Ohlone
- Muwekma
- Confederated Villages of Lisjan

02

## Languages spoken

Chochenyo



# Corrina Gould

This is first hand account of Corrina Gould and she is part of Confederated Villages of Lisjan talking on Podcast. She is talking about shell mounds all over the bay area. “Shell mounds are our traditional burial sites, our ceremonial places, our villages. It’s a part of a landscape. And what I like to say is that, you know, we are looking at this climate crisis right now, and everybody’s talking about leaving a smaller footprint on the Earth. Right? And so our ancestors did that. For thousands of years they left this small footprint. Our houses, our boats, our basket materials, almost everything we utilized was biodegradable, went back into the land. Right? My ancestors left few things behind – our mortars and pestles, our arrowheads, our shell beads, and our shell mounds, these monuments that my ancestors created burying our people in the land covered by soil and shell, and over thousands of years grew to be sometimes three story high. And they were devastated by the mass influx of people in the Bay Area, not just the Spanish or Mexican rancho period, but really around the time of the 49ers, and when the United States got here, the Bay Area became this booming place, and they began to level out our shell mounds and to build on top of them. oday, The Bay Street Mall was built on the largest of all 425. I’ve been in battle with a developer for over four and a half years for our oldest shell mound, the West Berkeley shell mounds on 4th and University, which looks like a parking lot today, but it’s the very first place our ancestors lived along the waters where freshwater met saltwater, along that marshy place where it aligns with our sacred Alcatraz Island and aligns with our Western Gate, where people think the Golden Gate Bridge is now. You know, these sacred places and landscapes you don’t see because of the asphalt and the buildings on top of it. We have responsibility and obligations to those sacred places.”

## California poppy

The California poppy can be used as medicine in teas, they can help treat anxiety, insomnia, and etc.. Their petals are also edible and be used to garnish dishes



# Plants/Trees

## California Buckeye

There are many different methods for processing and cooking buckeye seeds for food, depending upon the tribe. The seeds have medicinal properties and were cut into pieces, mixed with water, and made into suppositories for hemorrhoids



## Coffeeberry

The fruit is also often added to supplements purported to improve brain health and increase energy levels. It can also lower blood pressure.

# Landback movement

I found an article by Forbes explaining how Oakland gave back land to Confederated Villages of Lisjan. Also how it is not a federally recognized tribe, which makes it incredibly difficult to reclaim land.

Quote from article: “The city created a cultural conservation easement that gives the Indigenous-led Sogorea Te’ Land Trust stewardship over the land in perpetuity”. The land formerly known as Sequoia Point did not change hands overnight. The successful return of these five acres to Indigenous stewardship was preceded by years of protests, legal strategizing, fundraising, and hundreds of miles of prayer walks around San Francisco Bay. Yet in the end, the conservation easement was freely offered by Oakland and unanimously approved by the city council. “It’s an act of the people of Oakland, so to speak, returning this land to Indigenous stewardship,” says Darin Ranelletti, Oakland’s housing security policy director. The city of Oakland remains the official property owner. The public will continue to have access, but the Sogorea Te’ Land Trust will be able to close the site for habitat restoration projects and private events such as ceremonies.”







# Eviromental

---

## Vulnerability

BY: EMIKO 

## Risk Range



### DROUGHT RISK

Very High



### STORM RISK

High



### HEAT RISK

Significant



### FLOOD RISK

Relatively Low\*



### FIRE RISK

Relatively Low



### About This Rating

ClimateCheck® ratings reflect hazard risk at a property relative to the rest of the contiguous United States. Ratings are based on projected 2050 risk and the change from historical risk. A rating of 1 represents the lowest risk; 100 is the highest. [See our methodology for details.](#)



# RISK OF NATURAL DISASTERS

## RISKS



62%

### Drought Risk

Water stress now is about 44%. Projected water in 2050 is about 48% Which would mean there's less water in other parts. Drought risk is 16% lower than average for people in California (74%)



49%

### Storm Risk

Yearly rainfall is projected to increase from about 22.4". Will reach about 23.2" in the next 10 years. Historically about 12.8 of rain fell over 10 extreme storms each year.



33%

### Fire Risk

Because of extreme dry air and poor weather conditions. Around 2050 there will be extreme risk conditions for fire to spread. Compared to 10 historically. A fire here as a significant chance of being high if conditions stay like this.



22%

### Heat Risk

Heat waves that are above normal. A day that reaches 86F is considered hot for this location. This part of east Oakland has about 7 "hot" days per year.



1%

### Flood Risk

Since heavy rainfall isn't common and there no ocean or big bodies of water near this area. So the

# CALIFORNIA WILD FIRES 2022

 <b>Casualties</b>	<b>People</b>	9 people died. They were 554,342 emergency responses	
	<b>Animals</b>	600 mountains lions died due to the fires.	
	<b>Damage cost</b>	It costed 16.6 million dollars. This includes all 56 million acres of land destroyed.	



## Photos from wildfires



A stylized illustration of a lush green landscape. Two large, dark green trees with dense foliage frame the scene on the left and right. The ground is a vibrant green with various grasses and small plants. At the top of the image, a white ruler with black markings is visible. In the center, the text "LOCAL ACCESS TO GET PLACES" is written in a bold, orange, sans-serif font.

**LOCAL ACCESS TO GET PLACES**

Type an address, neighborhood or city

Go

### 6742 Foothill Boulevard

Havenscourt, Oakland, 94605

Commute to **Downtown Oakland**

20 min 36 min 38 min 60+ min View Routes

Favorite

Map

Nearby Oakland Apartments on Redfin

Looking for a home for sale in Oakland?

Walk Score  
**86**

#### Very Walkable

Most errands can be accomplished on foot.

Transit Score  
**57**

#### Good Transit

Many nearby public transportation options.

Bike Score  
**62**

#### Bikeable

Some bike infrastructure.



About your score

Add scores to your site





## Transportation Scores

	What is it?	Graph Info
Walk Score	The walk score is 89. Which means most errands can be accomplished on foot.	Groceries, parks, and schools are the most walkable categories.
Transit Score	Transit score is 57. Which means that there are many public transportation options and it is more convenient for most trips.	
Bike Score	Bike is 62. Which means some bikes infrastructure.	



# Tree equity score

In my neighborhood

90



**Tree equity score**

My tree equity score is 95

32%



**Children & seniors**

The percentage of seniors and children is 32%

3%



**Linguistic isolation**

Percentage of linguistic population is 3%

40k



**Health burden index**

Percentage of health burden index is 30

# Tree equity score

## In neighborhood

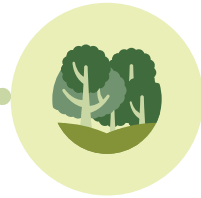
**Heat disparity**  
Heat disparity is +3.7



**POC**

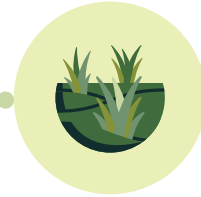
Percentage of poc's is  
54%

**People in poverty**  
Percentage of people  
in poverty is 33%



**Unemployment**

Percentage of people  
unemployed is 0%





# **Climate Justice Organization and Groups**

# The greenlining institute



## Groups involved & designed for

African American, Asian American, and Latino American community leaders in 1993 to fight injustice, increase the participation of people of color in policymaking

## Mission, Visions, and goals

The Greenlining Institute works towards a future where communities of color can build wealth, live in healthy places filled with economic opportunity, and are ready to meet the challenges posed by climate change.

## Accomplishm

They negotiated hundreds of billions of dollars in community

# The greenlining institute



10K

## Invitations

Prospective attendees are invited to sign up for a volunteer shift in exchange for free registration. You can register on their website.

40K

## Helping out with climate justice

Develop and deploy a Vulnerable Communities Platform that consolidates and updates existing data to identify the communities most impacted by climate change in California. My reasoning is

they've raised 5.2 billion for economic and climate justice practice in communities they are also located in Marriot building in Oakland.

50K

## REFLECTION

I learned that my neighborhood has a lot fire and drought risks. I learned that there are less poc people in my neighborhood than I expected. My most interesting discovery is the different plants that are native in my area. Also how many uses they have. I might explore on how to put out a fire in your home since there's a risk of one happening in my home. I also want to explore the different native tribes that lived in my area. Examples of the tribes I would want to learn more about are Confederated Villages of Lisjan. The walking score in my neighborhood really surprised me, because I've never been able to walk anywhere. Only place I've ever walk to and from my house is my summer camp across the street. I've learned about ways I can help and impact my community/neighborhood. In many ways I feel like I even when I do something small it can make a huge difference when we all do something small to help out our neighborhoods. I feel closer and like I've made a difference in the world I hope more people can do the same. `



## **Action I took**

I made a graphic poster and posted it. I talked about how we don't have to waste. Our planet is dying and we need to take action now. I hope people will take note of it.

FRIENDLY REMINDER:

# WE DON'T HAVE TIME TO WASTE

SAVE OUR PLANET TODAY BY CLEANING UP  
YOUR NEIGHBORHOODS



This has important information will awareness to the issues going on with the planet.

# RAINFORESTS OF THE WORLD INFOGRAPHICS



## MERCURY

It's the closest planet to the Sun and the smallest in the Solar System



## VENUS

Venus has a beautiful name and is the second planet from the Sun



## MARS

Despite being red, Mars is actually a cold place. It's full of iron oxide dust



# RAINFORESTS OF THE WORLD INFOGRAPHICS

## RAINFORESTS FAUNA IN AFRICA



# RAINFORESTS OF THE WORLD INFOGRAPHICS

## RAINFOREST PARTS



### 1 EARTH

Earth is the third planet from the Sun



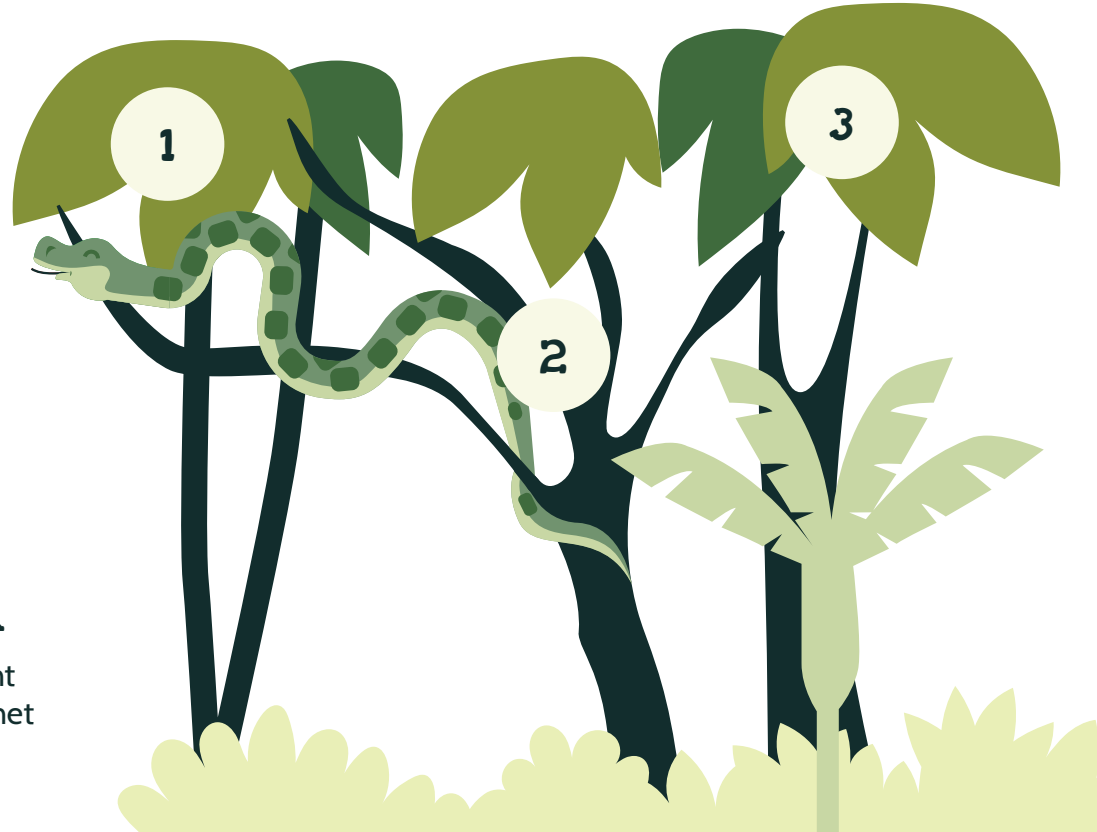
### 2 NEPTUNE

Neptune is the farthest planet from the Sun



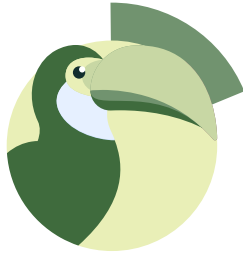
### 3 JUPITER

Jupiter is a gas giant and the biggest planet



# RAINFORESTS OF THE WORLD INFOGRAPHICS

## TYPES OF BIRDS IN THE RAINFOREST



**20%**

**MARS**

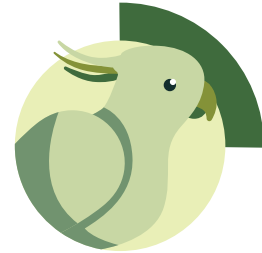
Despite being red, Mars is actually a cold place. It's full of iron oxide dust



**15%**

**VENUS**

Venus has a beautiful name and is the second planet from the Sun



**25%**

**NEPTUNE**

It's the fourth-largest object by diameter in the Solar System



# RAINFORESTS OF THE WORLD INFOGRAPHICS



**75%**

**MERCURY**

Mercury has nothing to do with the liquid metal, since Mercury was named after the Roman messenger god

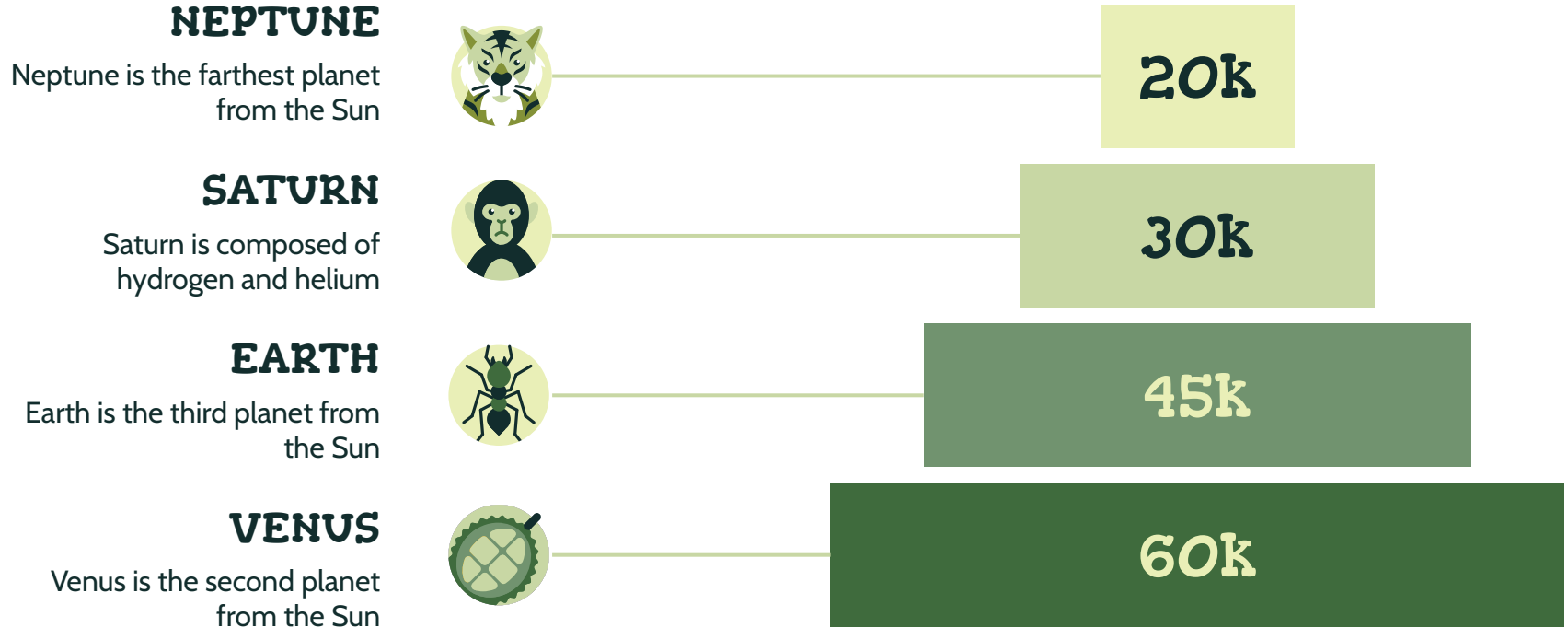
**65%**

**JUPITER**

Jupiter is a gas giant and the biggest planet in the Solar System. It's the fourth-brightest object in the night sky



# RAINFORESTS OF THE WORLD INFOGRAPHICS



# RAINFORESTS OF THE WORLD INFOGRAPHICS



## JUPITER

- Jupiter is the biggest planet of them all
- Saturn is composed of hydrogen and helium

## VENUS

- Despite being red, Mars is a cold place
- Pluto is now considered a dwarf planet

## MARS

- Mercury is the closest object to the Sun
- Jupiter is a gas giant and the biggest planet

## MERCURY

- Saturn is composed of hydrogen and helium
- Ceres is located in the main asteroid belt

# RAINFORESTS OF THE WORLD INFOGRAPHICS

## TYPES OF MONKEYS



**2k**

**MARS**

Despite being red, Mars is actually a cold place. It's full of iron oxide dust



**1k**

**VENUS**

Venus has a beautiful name and is the second planet from the Sun



**7k**

**NEPTUNE**

It's the fourth-largest object by diameter in the Solar System

# RAINFORESTS OF THE WORLD INFOGRAPHICS

## DIFFERENT RAINFORESTS IN AUSTRALIA AND THEIR FAUNA



### NEPTUNE

Neptune is the farthest planet from the Sun



### SATURN

Saturn is composed of hydrogen and helium



### EARTH

Earth is the third planet from the Sun



### VENUS

Venus is the second planet from the Sun



# RAINFORESTS OF THE WORLD INFOGRAPHICS

30K

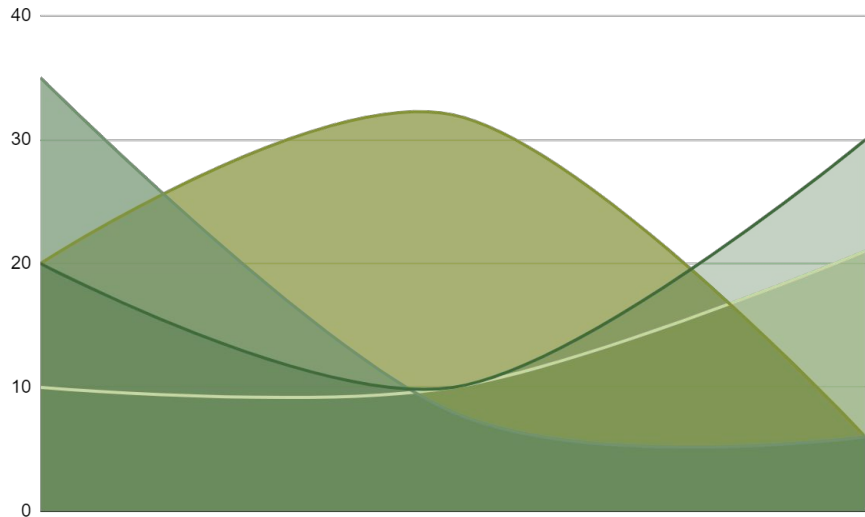
MERCURY

It's the closest planet to the Sun and the smallest in the Solar System

25K

MARS

Despite being red, Mars is actually a cold place. It's full of iron oxide dust



10K

VENUS

Venus has a beautiful name and is the second planet from the Sun

20K

NEPTUNE

It's the fourth-largest object by diameter in the Solar System

Follow the link in the graph to modify its data and then paste the new one here. For more info, [click here](#)



# RAINFORESTS OF THE WORLD INFOGRAPHICS

## TYPES OF RAINFORESTS



100K

1

### JUPITER

The planet Jupiter is a gas giant and the biggest object in the Solar System



200K

2

### SATURN

It's the sixth planet from the Sun. It is composed of hydrogen and helium



300K

3

### MARS

Despite being red, Planet Mars is a very cold place full of iron oxide dust



400K

4

### VENUS

Venus has a beautiful name and is the second planet from the Sun

# RAINFORESTS OF THE WORLD INFOGRAPHICS



**18K**

**SATURN**

It's composed of hydrogen and helium

**42K**

**MARS**

Despite being red, Mars is a cold place

**31K**

**MERCURY**

It's the closest object to the Sun

**36K**

**JUPITER**

It's a gas giant and the biggest planet

# RAINFORESTS OF THE WORLD INFOGRAPHICS

## HOW TO TAKE CARE OF THE RAINFOREST

01

### MERCURY

It's the closest planet to the Sun and the smallest in the Solar System

02

### MARS

Despite being red, Mars is actually a cold place. It's full of iron oxide dust



03

### VENUS

Venus has a beautiful name and is the second planet from the Sun

04

### NEPTUNE

It's the fourth-largest object by diameter in the Solar System

# RAINFORESTS OF THE WORLD INFOGRAPHICS

## TYPES OF RAINFOREST PLANTS

50K



### NEPTUNE

It's the fourth-largest object by diameter in the Solar System

100K



### VENUS

Venus has a beautiful name and is the second planet from the Sun

150K



### MERCURY

It's the closest planet to the Sun and the smallest in the Solar System

200K



### MARS

Despite being red, Mars is actually a cold place. It's full of iron oxide dust

# Instructions for use

In order to use this template, you must credit [Slidesgo](#) and [Freepik](#) in your final presentation and include links to both websites.

## You are allowed to:

- Modify this template.
- Use it for both personal and commercial projects.

## You are not allowed to:

- Sublicense, sell or rent any of Slidesgo Content (or a modified version of Slidesgo Content).
- Distribute Slidesgo Content unless it has been expressly authorized by Slidesgo.
- Include Slidesgo Content in an online or offline database or file.
- Offer Slidesgo templates (or modified versions of Slidesgo templates) for download.
- Acquire the copyright of Slidesgo Content.

For more information about editing slides, please read our FAQs or visit Slidesgo School:

<https://slidesgo.com/faqs> and <https://slidesgo.com/slidesgo-school>

# Infographics

You can add and edit some **infographics** to your presentation to present your data in a visual way.

- Choose your favourite infographic and insert it in your presentation using Ctrl C + Ctrl V or Cmd C + Cmd V in Mac.
- Select one of the parts and **ungroup** it by right-clicking and choosing “Ungroup”.
- **Change the color** by clicking on the paint bucket.
- Then **resize** the element by clicking and dragging one of the square-shaped points of its bounding box (the cursor should look like a double-headed arrow). Remember to hold Shift while dragging to keep the proportions.
- **Group** the elements again by selecting them, right-clicking and choosing “Group”.
- Repeat the steps above with the other parts and when you’re done editing, copy the end result and paste it into your presentation.
- Remember to choose the “**Keep source formatting**” option so that it keeps the design. For more info, please visit **Slidesgo School**.

