

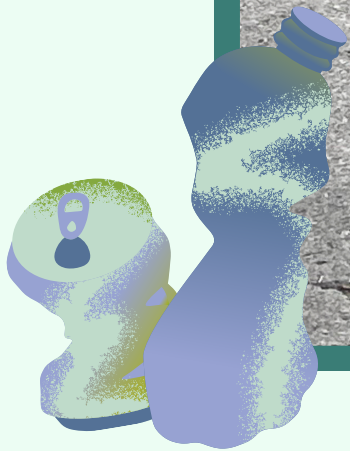
MARCH, 14

BREANNA FAYE ROGERS



# SOUTHSIDE CHICAGO LITTERING

PHOTO ESSAY



THE SOUTH SIDE OF CHICAGO IS HOME TO AROUND 224,000 PEOPLE. ALL HOMEOWNERS HAVE 2-3 GARBAGE CANS, ONE FOR REGULAR GARBAGE AND ONE FOR RECYCLING. MY GARBAGE CAN, FOR EXAMPLE, AS SHOWN IN THE PHOTO, IS CLEAN AND WELL-MAINTAINED SO THAT GARBAGE DOES NOT OVERFLOW.

MARCH						
SUN	MON	TUE	WED	THU	FRI	SAT
25	26	27 Household C... Garbage	28	29 Household C...	1	2 Household C...
3	4 Pulaski Day	5 Household C... Garbage Recycling	6	7 Household C...	8	9 Household C...
10	11	12 Household C... Garbage	13	14 Household C...	15	16 Household C...
17	18	19 Garbage Recycling	20	21	22	23
24	25	26 Garbage	27	28	29	30
31	1	2 Garbage	3	4	5	6

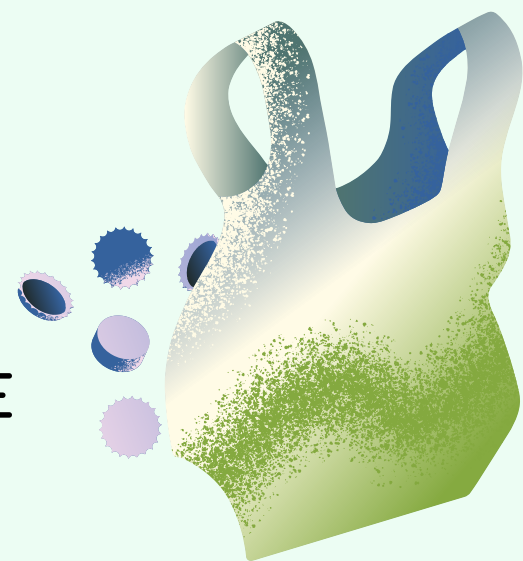
## SOUTHDSIDE CHICAGO

MARCH						
SUN	MON	TUE	WED	THU	FRI	SAT
25	26	27 Household C... Garbage	28	29 Household C...	1	2 Household C...
3	4 Pulaski Day	5 Household C... Garbage	6	7 Household C... Recycling	8	9 Household C...
10	11	12 Household C... Garbage	13	14 Household C...	15	16 Household C...
17	18	19 Garbage	20	21 Recycling	22	23
24	25	26 Garbage	27	28	29	30
31	1	2 Garbage	3	4	5	6

## DOWNTOWN CHICAGO

THE CITY OF CHICAGO DOES AN EXCELLENT JOB OF MAINTAINING GARBAGE WITHIN THE CANS. CARTS ARE ALLOCATED TO A SPECIFIC ADDRESS AND HAVE A SERIAL NUMBER HOT STAMPED ON THE FRONT TO HELP IDENTIFY A LOST OR STOLEN CART. MORE THAN ONE MILLION TONS OF RUBBISH AND RECYCLABLES ARE COLLECTED EACH YEAR. PICK-UPS TAKE PLACE WEEKLY, MONDAY THROUGH FRIDAY.

HOWEVER, THE CITY RECEIVES MORE CARE AND ATTENTION FOR LITTERING. DOWNTOWN CHICAGO RECIEVED TWICE THE ATTENTION COMPARED TO THE SOUTHSIDE.



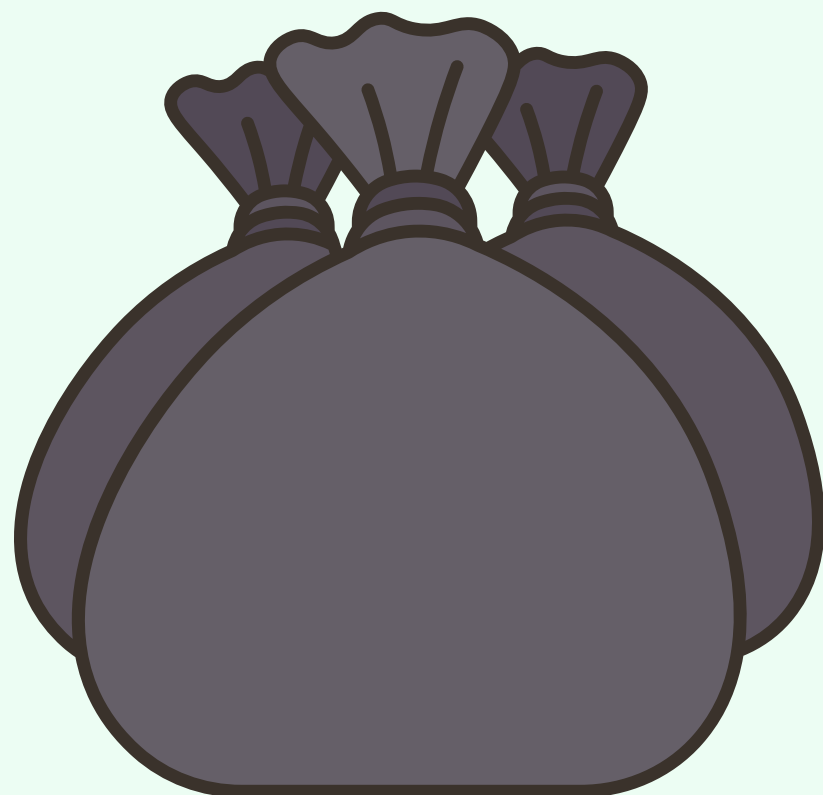


CITIZENS AND COMMUNITIES FREQUENTLY HAVE TO CARE FOR LITTER BETWEEN GARBAGE COLLECTION DATES ON THEIR OWN. IN THIS PHOTOGRAPH, A MAN SWEEPS THE STREET IN FRONT OF HIS BUSINESS TO REMOVE WASTE AND LITTER NOT TAKEN CARE OF BY THE CITY.





THERE IS A VAST FIELD NEAR MY HOUSE THAT IS LEFT UNATTENDED. INSTEAD OF THE COMMUNITY USING THIS TO THEIR BENEFIT, THE LAND CONTINUES TO GROW WASTE. DURING THIS PROJECT I REALIZED HOW COMMON WASTE IS IN MY SURROUNDINGS. I'VE NOTICED THAT THIS IS ALSO PREVENTING PLANTS AND GRASS FROM PROPERLY GROWING IN THIS REGION.





THE CITY OF CHICAGO DOES ITS BEST TO PROVIDE GARBAGE CANS IN DENSELY POPULATED REGIONS. FOR EXAMPLE, THE GARBAGE CAN IS SHOWN IN FRONT OF THE BUS STOP. MANY BUS STOPS HAVE TRASH CANS AFFIXED IN THE HOPES THAT SOMEONE MAY USE THEM INSTEAD OF THE GROUND. THIS ACT HAS THE POTENTIAL TO BE EXTREMELY BENEFICIAL IN TERMS OF REDUCING TRASH.





YOU NEVER KNOW HOW MANY GARBAGE CANS SURROUND YOU UNTIL YOU START TO PAY ATTENTION TO LITTERING.

WHEN WASTE IS SOURCE SEGREGATED, DIFFERENT SORTS OF RECYCLABLES WILL NOT CONTAMINATE ONE ANOTHER. PAPER AND GLASS, FOR EXAMPLE, ARE EASILY RECYCLABLE MATERIALS; BUT, A CRACKED BOTTLE MIGHT CONTAMINATE A WHOLE CONTAINER OF PAPER, RESULTING IN ITS DISPOSAL IN A LANDFILL. WITH THIS MANY DUMPSTERS, THERE SHOULD BE NO EXCUSE TO LITTER. IF YOU ARE NOT NEAR ONE, YOUR NEXT STOP WILL BE.

**THIS INITIATIVE HAS SHOWN ME THE PREVALENCE OF TRASH ACROSS THE SOUTHSIDE. THESE TWO PHOTOGRAPHS WERE TAKEN RIGHT OUTSIDE MY SCHOOL. WHERE THERE ARE MULTIPLE GARBAGE CANS. THIS RESEARCH HAS PROMPTED ME TO EXAMINE WHY PEOPLE LITTER. LAZINESS OR CARELESSNESS? OR IS LITTERING A GENERATIONAL PROBLEM? THE ONLY WAY TO STOP LITTERING IS TO TELL A FRIEND, WHO CAN THEN WARN ANOTHER FRIEND ABOUT THE CONSEQUENCES OF LITTERING.**

